

RETECH 

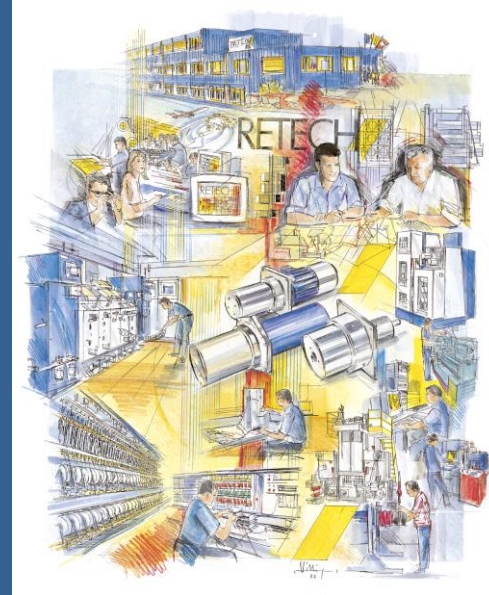
**expert at monitoring your
yarn tension and drawing
your fibres to perfection**

Engineered and produced in Switzerland 

Welcome to Retech's product presentation:

Contents:

- History
- Customers
- Products
 - Components
 - On line monitoring systems
 - Machines
- Service



HISTORY:



RETECH was founded in 1974 by Heinz von Arx and is 100% family owned



In 1985 the production centre in Meisterschwanden was built. The plant was enlarged in 1991, 1998, 2000 and 2010

HISTORY:



**Production plant
in Meisterschwanden
Switzerland**

**30 Km north of Lucerne
between Zurich and Berne**

HISTORY:

RETECH

Today RETECH employs approx. 35 people. Most of our staff are well qualified engineers in the field of:

- mechanics
- electric
- electronics
- software
- textile technology

Customers:

- machine manufacturers
approx. 60 - 65 % of turnover
- end users
approx. 35 - 40 % of turnover

CUSTOMERS:

*Your partner
for more than 40 years*

Machine manufacturers (OEM):

- Oerlikon
(Barmag / Neumag)
- SML / Sahm (Starlinger Group)
- Trützschler
- Van de Wiele
- SSM (Schweiter Group)
- Dietze & Schell
- FET (Fiber Extrusion Technology)
- VB S&T / M.A.E.
- Busschaert
- Hills Inc. USA
- Lohia, India

End users:

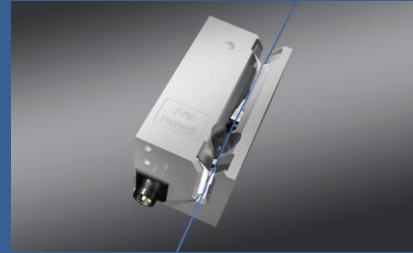
- PHP Fibers DE + USA,
Shenma-PHP China
- Bonar NL, USA + China
- Unifi
- Performance Fibers
- Trevira
- Teijin Monofilament / Aramid
- Clariant
- Invista
- Monosuisse
- Akzo Nobel
- Kordsa (Sabanci)
- various Universities



PRODUCTS:



Components



On Line Monitoring

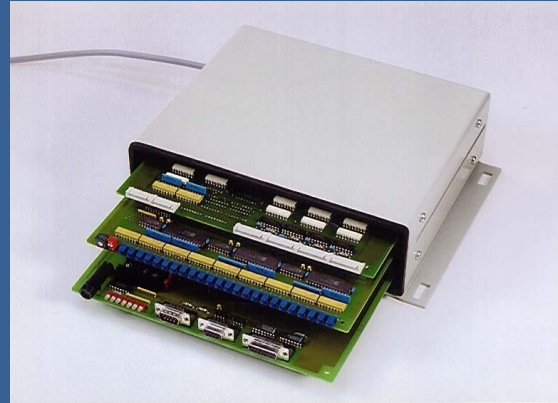


Machines

COMPONENTS:



Heating Elements



Temperature Control System

DRAWPIN:



resistance heated

Ø 60 mm

Ø 80 mm

available in diverse
shapes, dimensions
and surface coatings

ROTATING HEATED DRAWROLL:



induction heated

Ø 100 mm

Ø 130 mm

Ø 160 mm

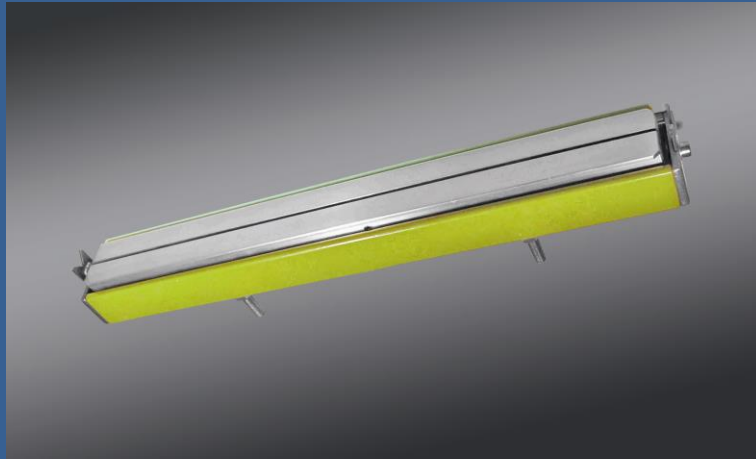
Ø 190 mm

resistance heated

Ø 60 mm

Ø 80 mm

PLATE HEATERS / OVENS:



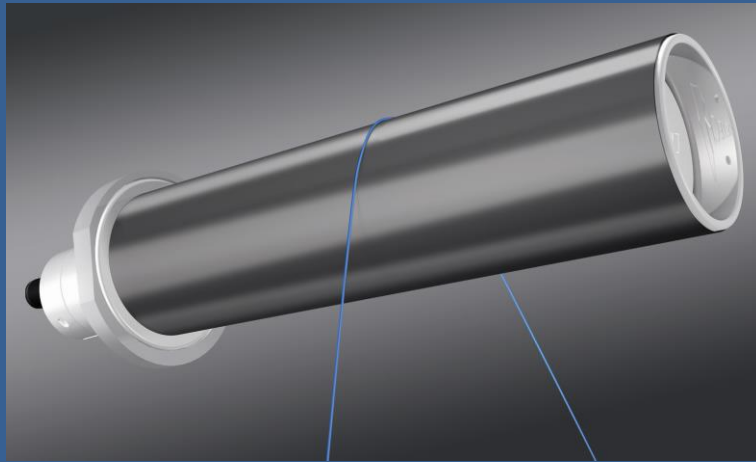
- resistance heated
- contact or convection
- 150 mm up to 500 mm

available in diverse shapes, dimensions and surface coatings

Specialities: Ovens up to 2 meter length and 550° C

AIR BEARING SEPARATOR ROLLS (ABSR):

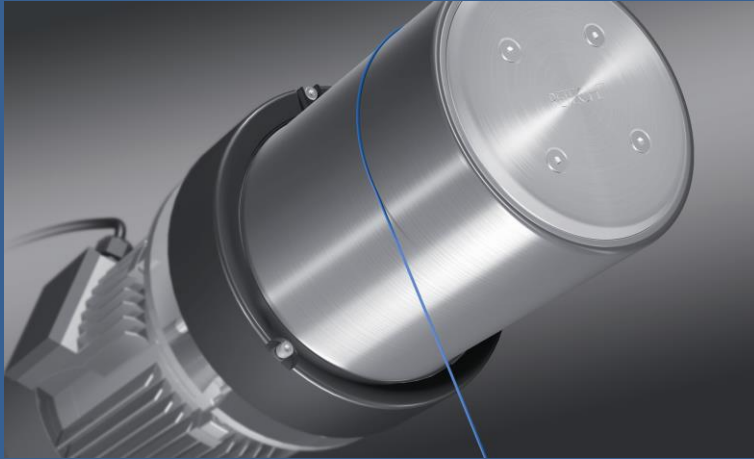
**ABSR: dimensions (35 x 80 mm / 36 x 158 mm 36 x 110 mm
58 x 125 mm / 58 x 228 mm / 58 x 295 mm / 58 x 320 mm)**



Advantages:

- various dimensions
- low air consumption
up to 30 % savings
- higher axial and radial
forces
- high speed solutions up
to 60'000 rpm
- very low inertia and
friction
- low maintenance

HEATED GODETS:



- induction heated
 - single zone (STS)
 - single zone (RTS)
 - multi zone (RTS)
- infrared heated

HEATED GODETS:

Heated Godet Rolls: optimized heating and motor capacity



Heated godets for spinning machines

Advantages

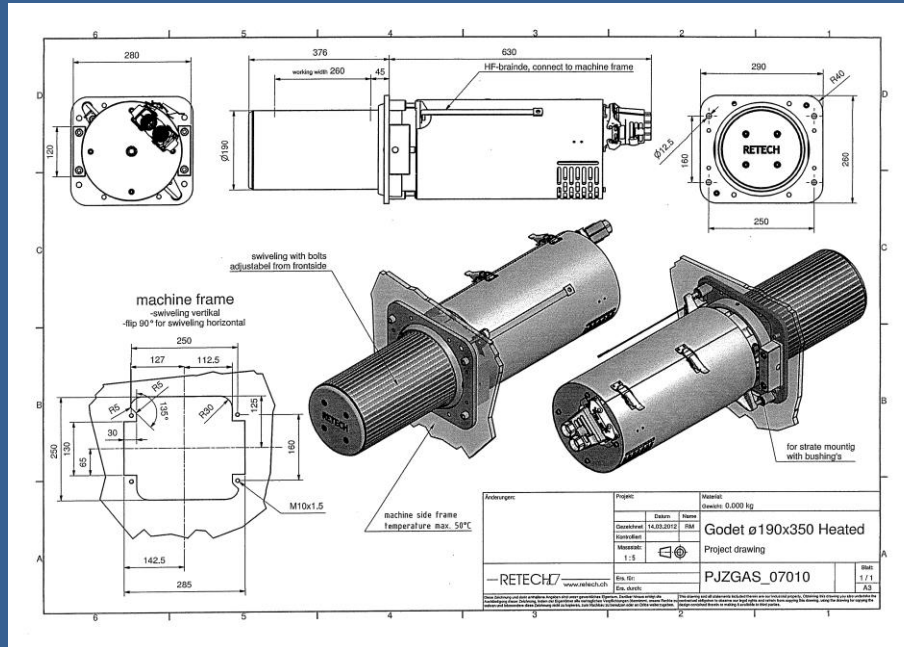
- speed up to 6000 m/min
- temperature up to 380° C
- excellent temperature profile
- no additional lubrication and cooling systems
- lifetime bearings
- no system balancing
- easy maintenance

HEATED GODETS:

Godet 190 x 350mm



HEATED GODETS:



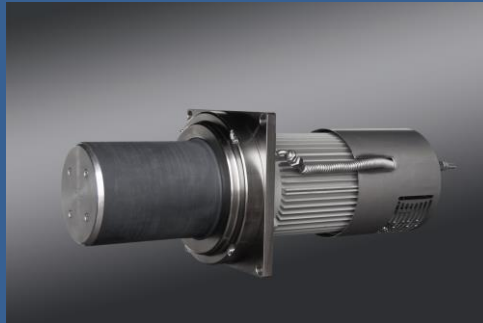
HEATED GODETS:

Infrared heated (RTS)



- Multi zone with rotating PT 100 and temperature transmitting system for special applications
- very high temperature (500° C)
- Special products (for medical purposes)

ACTIVE COOLED GODETS:

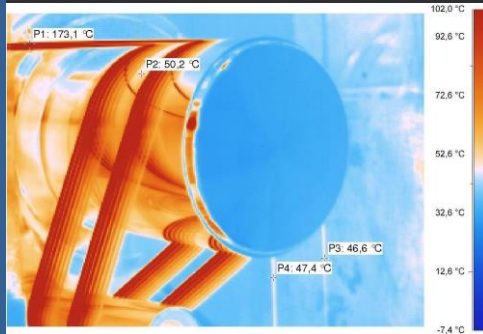


Liquid cooled rolls (LCR)

Active liquid cooling system, one zone forced cooling by circulating water in roll shell, for whole titre range

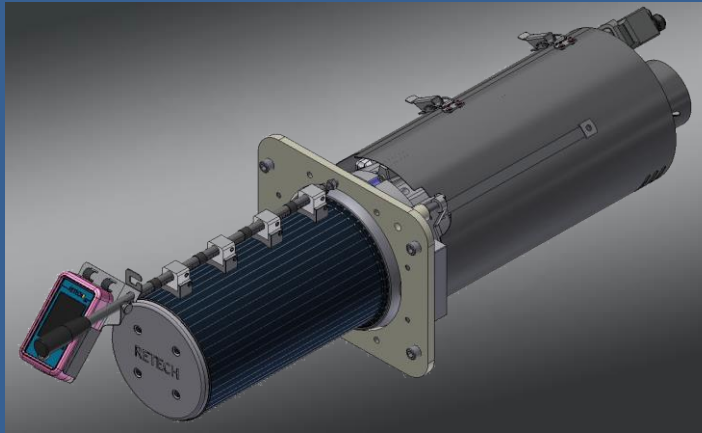
dimensions similar to (RTS)

Increasing need for cooling in technical & textile processes. (e.g. for special yarn properties, ultra low shrinkage yarn)



TEMPERATURE CONTROL SYSTEMS:

New Development: Temperature Surface Measurement Device



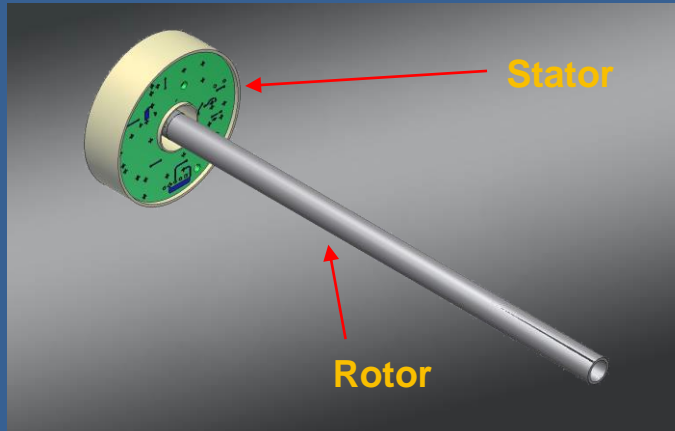
Continuously registered measurement

Advantages

- up to 4 measuring points
- convenient maintenance tool
- Small hand held operating panel

TEMPERATURE CONTROL SYSTEMS:

Temperature Transmitter UTR-4A



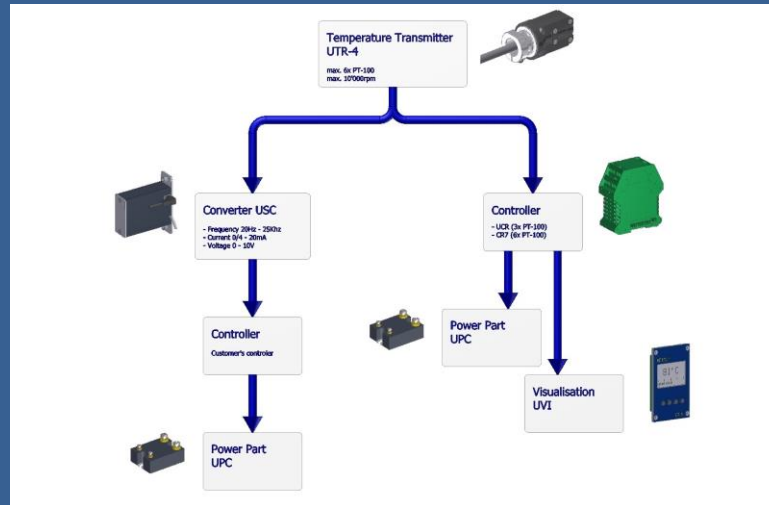
UTR-4A rotor and stator

Advantages

- data transfer in digital way
- used in combination with CR-7 controller or USC converter
- low power consumption
- robust design
- completely sealed
- control system for single or multi zone heated godets

TEMPERATURE CONTROL SYSTEMS:

Temperature Transmitter / Controller



Temperature Transmitter / Controller flow chart

ONLINE MONITORING SYSTEM:

Tension sensor: new measuring range (0-30 cN)



Standard measuring range: 0-60, 0-120 and 0-240 CN

Advantages

- innovative digital hall sensor technology
- designed for highest reliability
- simple installation and implementation
- compatible with existing units

ONLINE MONITORING SYSTEM:



Yarn tension sensor



Microprocessor card

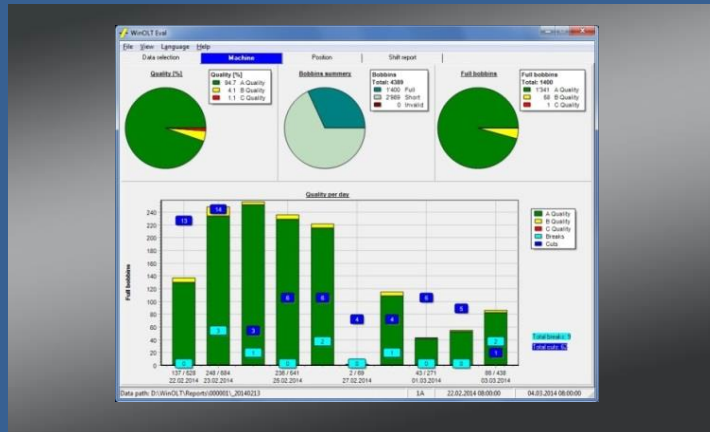


Software / Service

**Win - OLT, on line monitoring
of yarn tension in the production process
of DTY yarns**

ONLINE MONITORING SYSTEM

Win Eval: new evaluation software

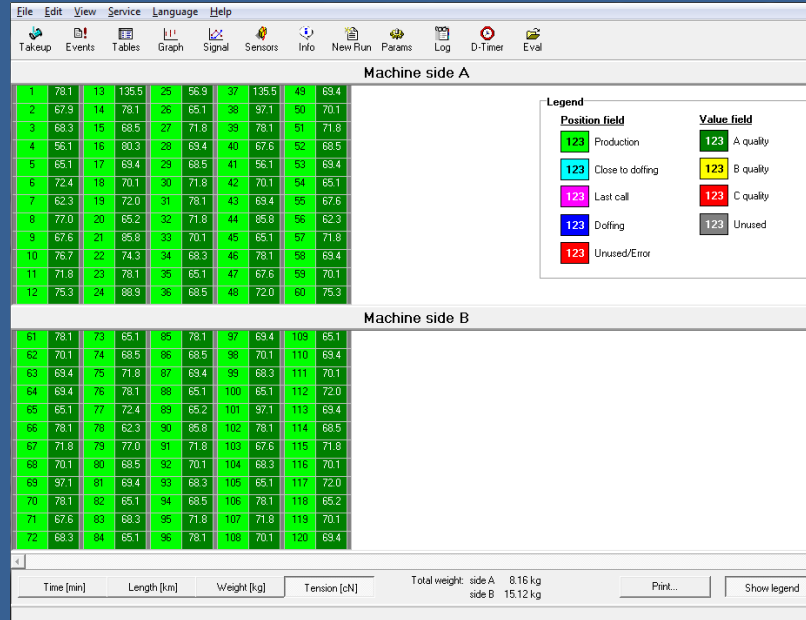


Statistics per shift, day or a defined period

Advantages

- optimizes machine efficiency
- huge database for plant manager
- easy handling software

ONLINE MONITORING SYSTEM:



MACHINES:



Custom-built



TEX2000

CUSTOM-BUILT MACHINES



Do you have a special idea?

**We help you to realize your project
and to achieve your goal**

CUSTOM-BUILT MACHINES

Custom-built Machines:



We offer:

- Engineering for
 - mechanics
 - electric
 - electronics
 - software
- Production
- Assembling
- Function control

- but no process guarantee

CUSTOM-BUILT MACHINES:



TEX 2000:



Particularly suited for small production lots, spun dyed yarns, special polymer and new fibers

TEX2000 machine in use for:
laboratory purpose, 1 position units, for additive or masterbatch producers and universities

Flexible, modular, false-twist draw texturing machine

SERVICE:



Modernisation / Conversions:

Draw wind and draw twist machines
with

- new heating elements
- new temperature controls

Spinning plants

with

- new heated godets
- additional heated godets
(e.g. into FDY line for HT, etc.)

On line monitoring systems for

- tension monitoring
- package density monitoring

QUESTIONS:

*You are always invited
to visit us in Switzerland.
We are at your disposal!*



Contact address:

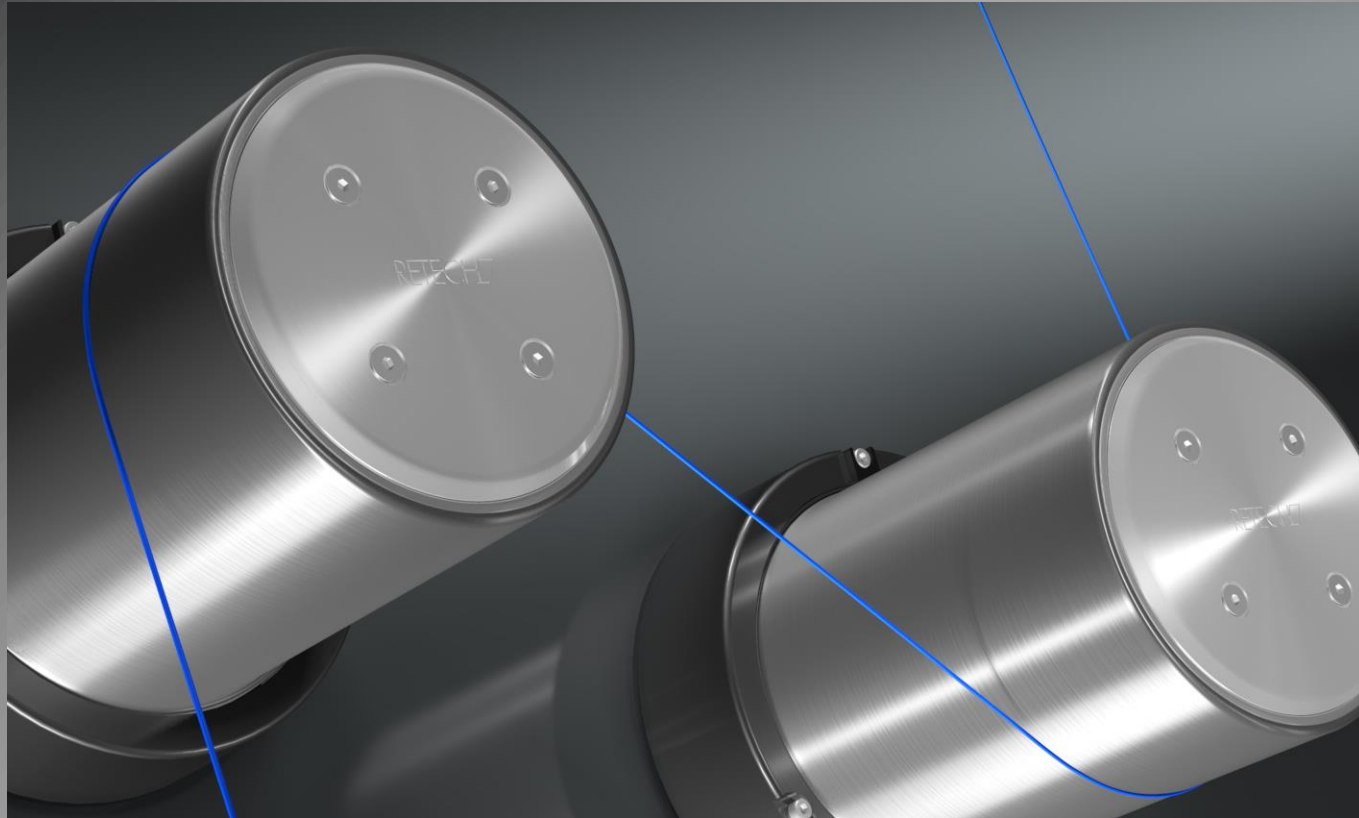
RETECH Aktiengesellschaft

Lindenmattstrasse 16, CH-5616 Meisterschwanden, Switzerland

Phone: +41 56 676 66 33 / Fax: +41 56 676 66 36

E-mail: info@retech.ch / Web: www.retech.ch


Get your inspiration – become fascinated by the „blue thread“





RETECH

**expert at drawing your
fibres to perfection**

Heat treatment and drawing of synthetic filaments: rolls, godets, heating elements, on-line monitoring, control systems, custom built machines. Engineered and produced in Switzerland  Visit us at www.retech.ch